

Navigating Global Challenges in Public Procurement: Innovation, Technology, and Resilience

Panel Discussion:

Mukul Kumar, Stephane Bessadi, Vinay Sharma

March 7th, 2025

भारत सरकार
GOVERNMENT OF INDIA

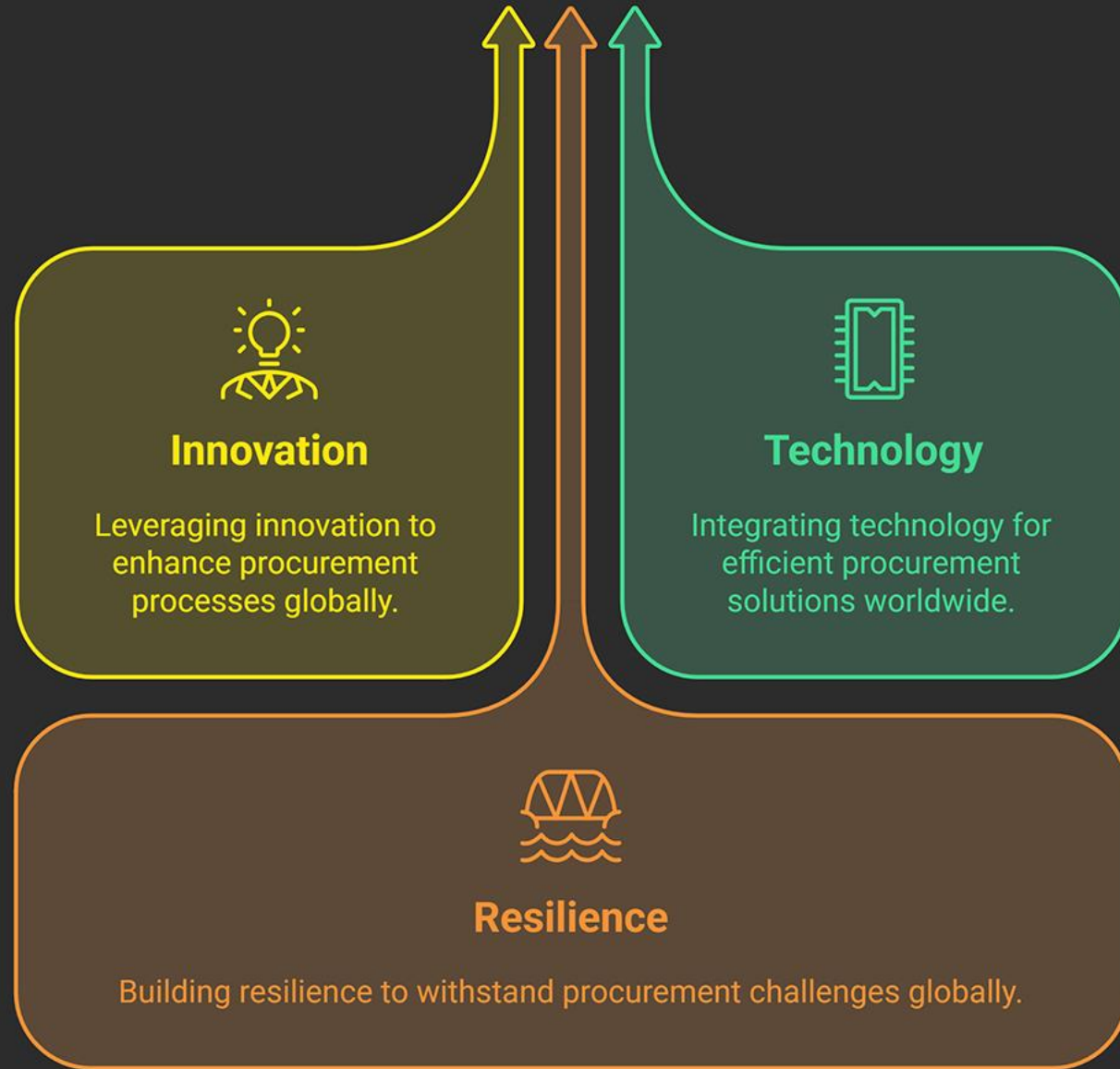
वित्त मंत्रालय
MINISTRY OF FINANCE



अरुण जेटली राष्ट्रीय वित्तीय प्रबंधन संस्थान

Arun Jaitley National Institute of Financial Management

An Autonomous Institution of Ministry of Finance, Government of India



Current Landscape of Public Procurement

**Impact of
technological
advancements**



**Rising demand
for
transparency
and
accountability**



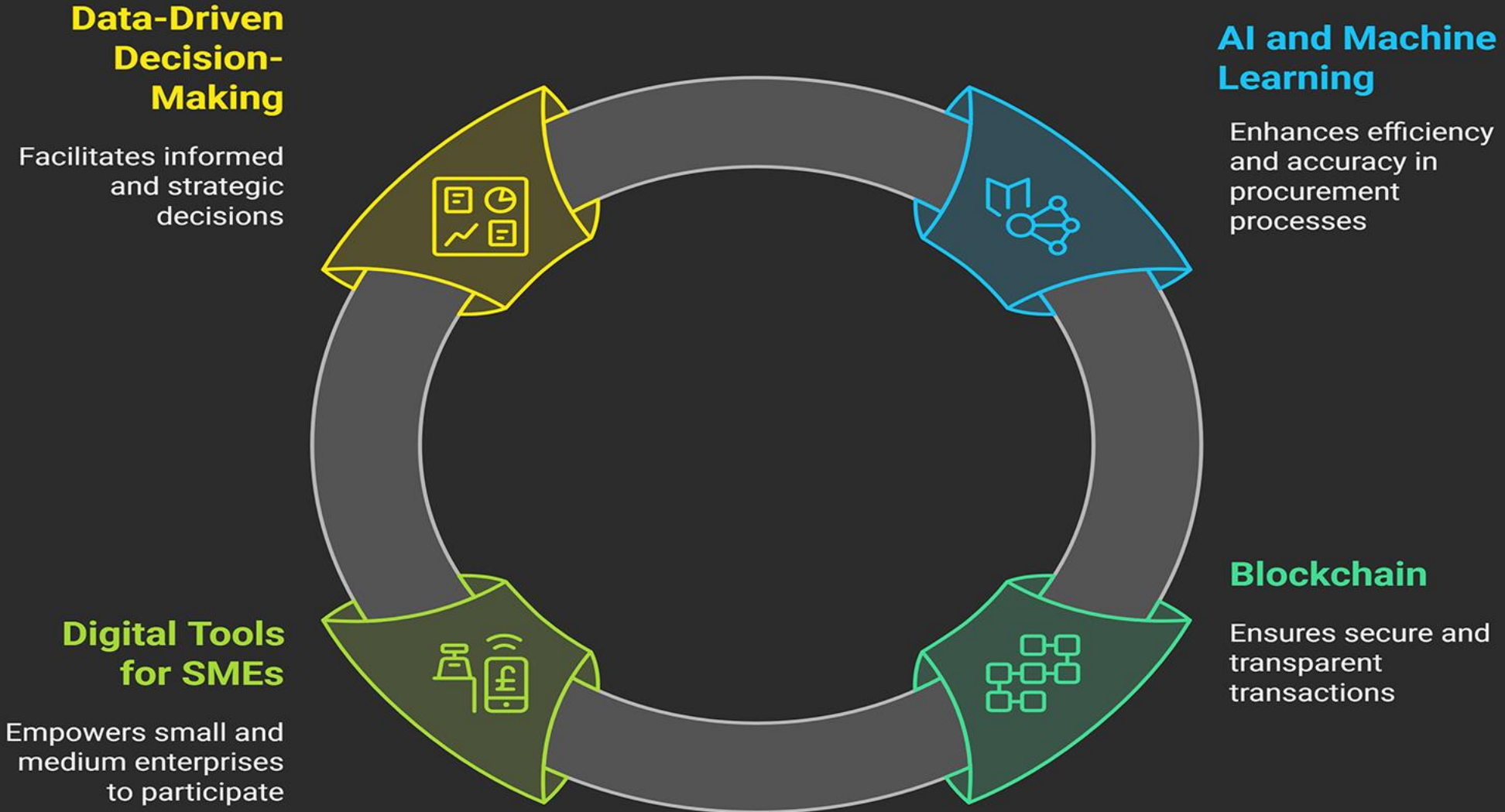
**Challenges
from
geopolitical
shifts**



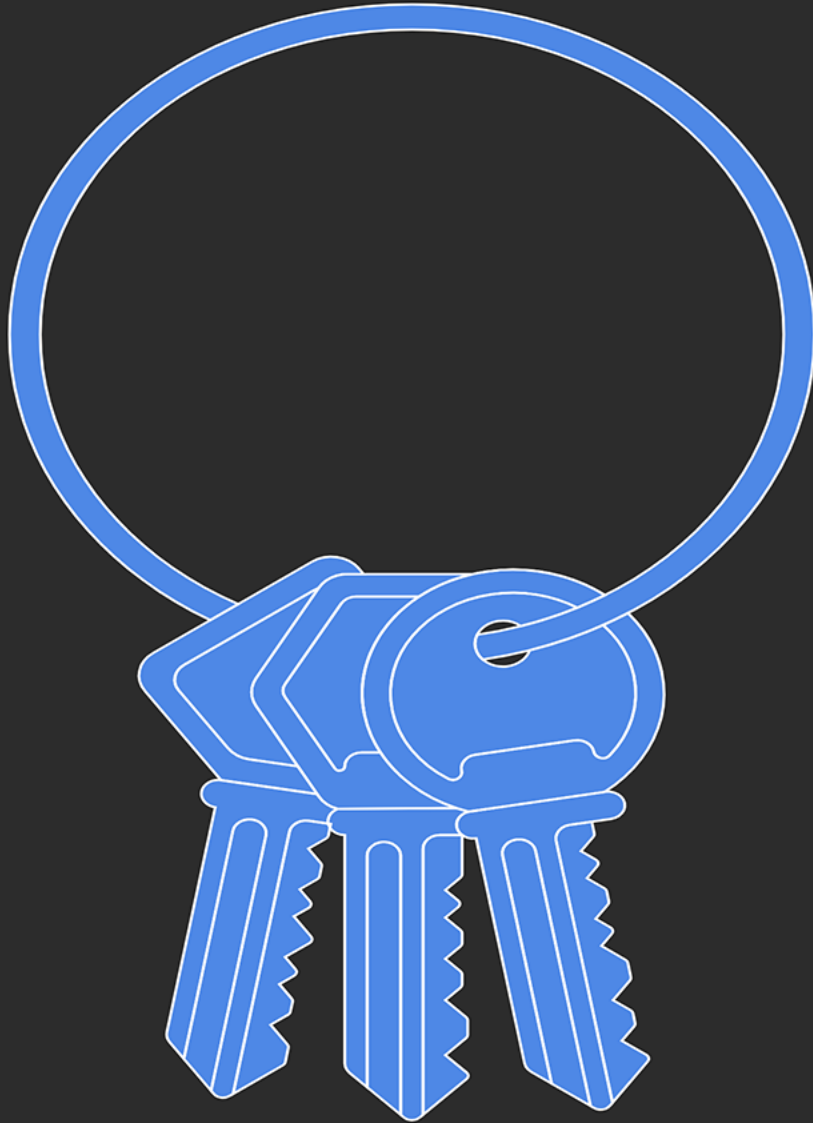
**Integration of
sustainable
and ethical
sourcing**



Transforming Public Procurement Through Technology



Fostering Resilient & Sustainable Supply Chains



Diversifying Supply Sources

Strategies to reduce risks by sourcing from multiple suppliers.

Sustainable Procurement

Integrating environmental criteria into purchasing decisions.

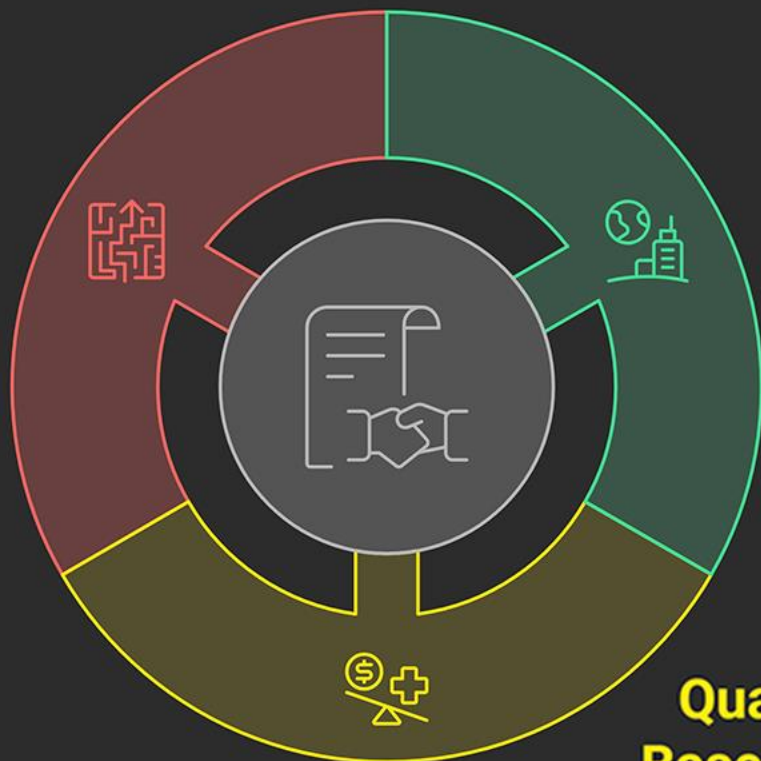
Cost-Balance Strategies

Finding equilibrium between cost, sustainability, and resilience.

Addressing Complex Models & Partnerships

Management Challenges

Navigating the complexities of diverse procurement arrangements.



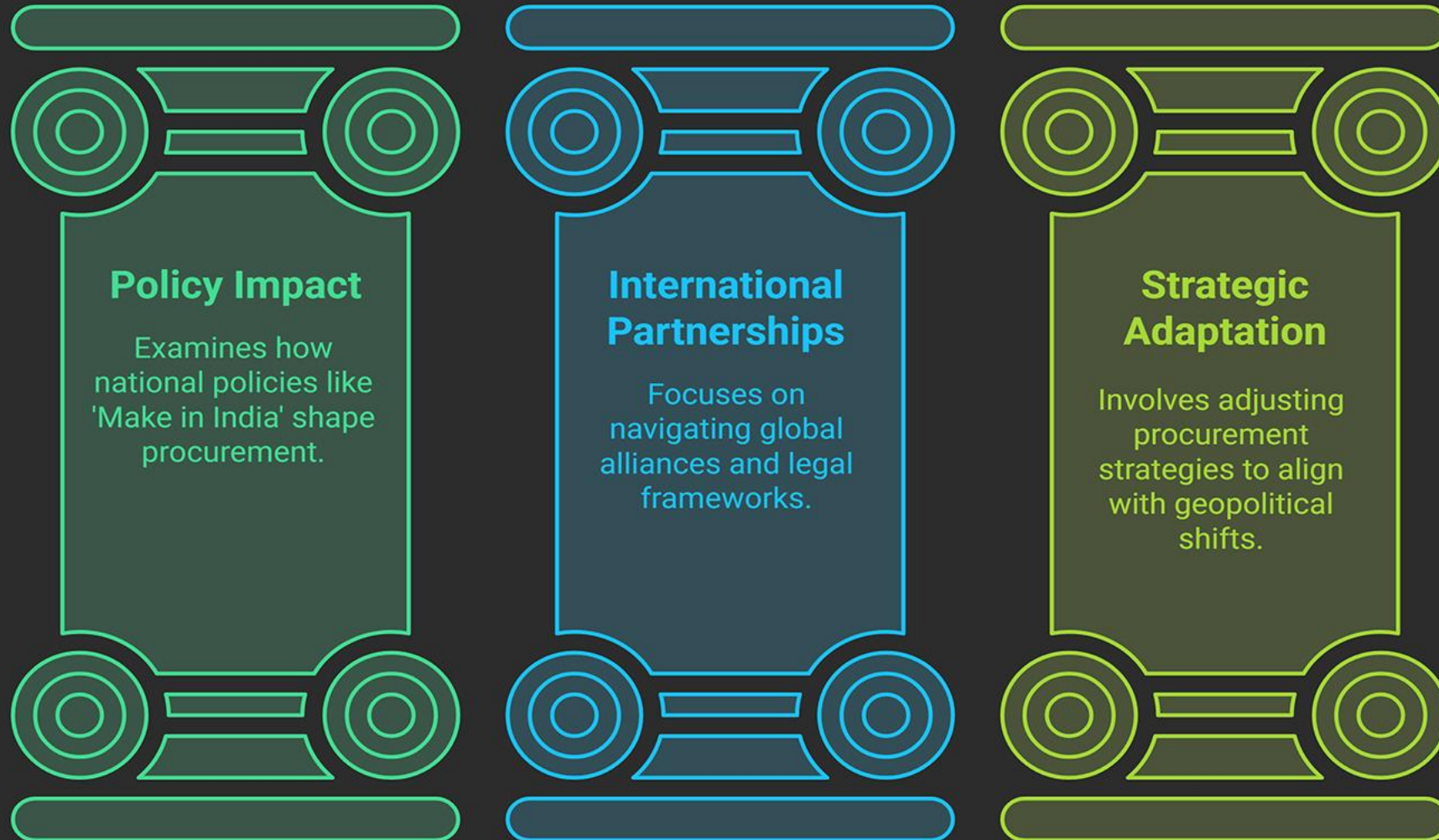
Public-Private Partnerships

Exploring collaborative ventures between public and private sectors.

Quality Cost-Based Selection

Balancing quality and cost to achieve optimal procurement outcomes.

Geopolitical Influences on Public Procurement



Risks, Fraud, & Corruption in the Digital Age

New vulnerabilities introduced by digital transformation

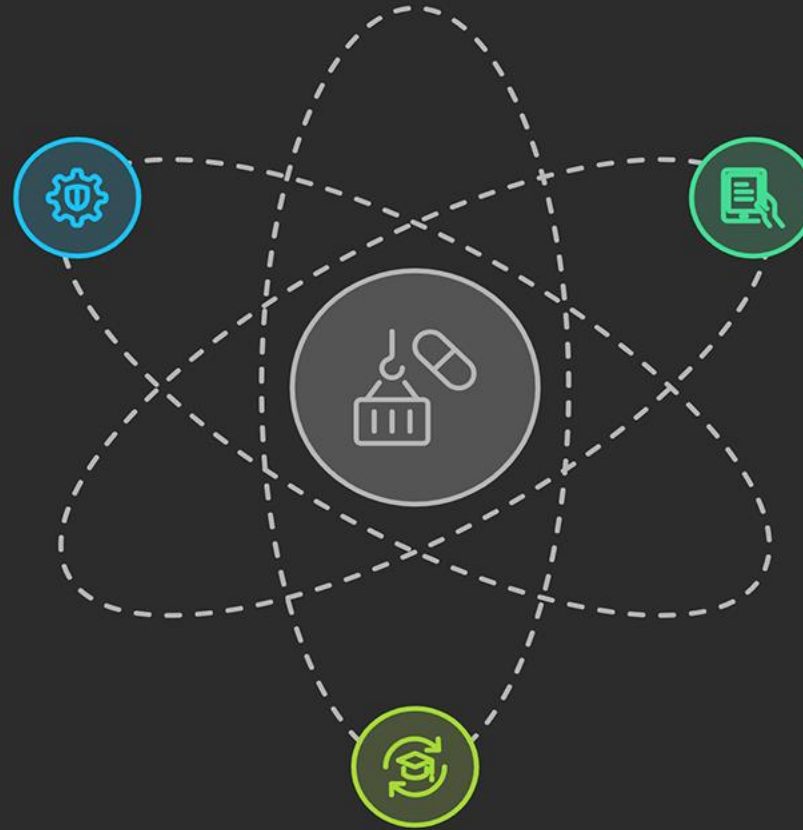
Cybersecurity risks and strategies to mitigate them



Using data analytics to combat fraud and enhance transparency

Strengthening Capacity & Oversight

Implementing oversight mechanisms to ensure adherence to standards



Essential digital skills for modern procurement professionals

Importance of continuous learning and skill development

Embracing Challenges & Innovations

Let Us Begin the Discussions

